



SOCIAL NORMS & AGENCY
LEARNING COLLABORATIVE

Critical Conversations Series

Moving Forward Social Norms
Theory and Practice: An
Interdisciplinary Perspective

Interpretation

- Click **Interpretation**  in the meeting controls at the bottom of the screen. / Cliquez sur l'icône **Interprétation**  dans le menu en bas de l'écran.
- Opening this menu will show: *Off, English, French* / Quand vous l'ouvrez, vous verrez: *Arrêt, Anglais, Français*
 - To hear the **interpretation** of session, choose desired language. / Pour avoir une **traduction** de cette séance, choisissez votre langue (Anglais ou Français) en cliquant dessus.
 - If you would not like to hear the interpretation, choose "Off" / Si vous ne souhaitez pas entendre de traduction, cliquez sur "Arrêt"
- You can respond in your preferred language and **do not** need to change settings. / Vous pouvez parler/répondre dans votre langue préférée **sans avoir besoin de modifier les paramètres.**

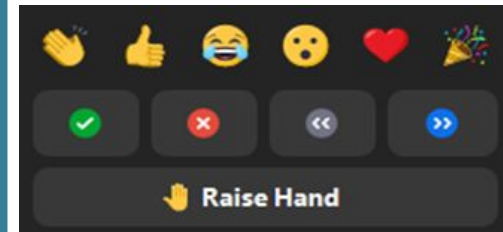
Zoom Logistics



Use the Chat box to join the dialogue. We would like to hear your thoughts and insights.



For questions, please click the Q&A icon and type in your questions there.



Use the reactions icon at the bottom of your screen to raise your hand if you would like to speak during the general Q&A session.



Tell us
about
yourself

In the chat,
introduce yourself
and where you're
joining from!

Social Norms and Agency Learning Collaborative (LC) Network: Who We Are



A network of passionate individuals and organizations working together to influence and shape the field of social norms and agency



Comprised of 5 communities in Anglophone West Africa, East Africa, Francophone West Africa, South Asia, and the Global Learning Collaborative community for those not residing within these regions



What We Do

**DOCUMENT & SHARE
EXPERIENCES**



**STRENGTHEN
CAPACITY**



Learning Collaborative
ACTIVITIES



**IMPROVE PRACTICE
THROUGH
PARTNERSHIPS**



**CO-CREATE SOCIAL
NORMS
RESOURCES & PRODUCTS**

Co-Create Tools & Knowledge Products

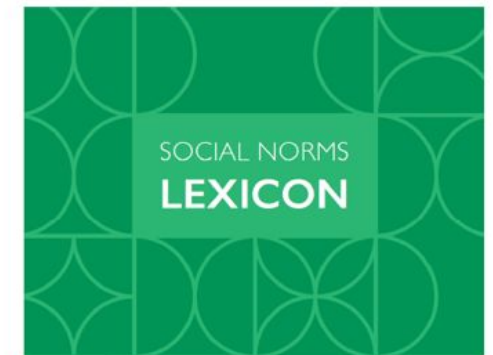
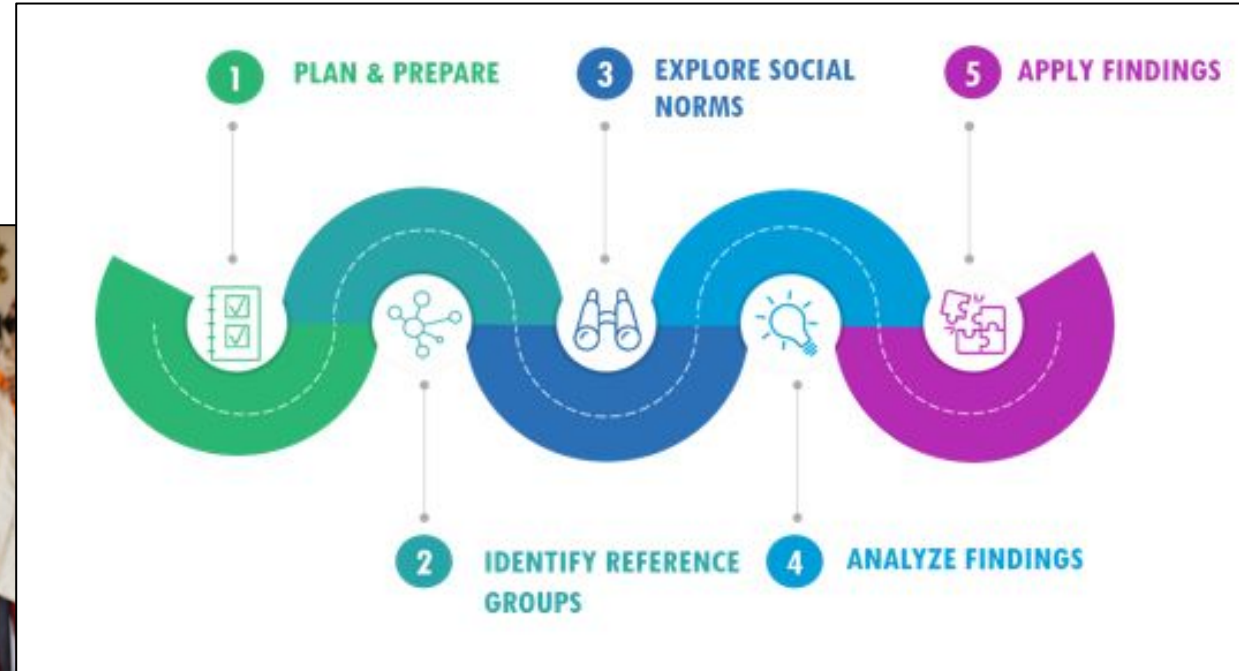


Getting Practical
Integrating Social Norms into Social
and Behavior Change Programs

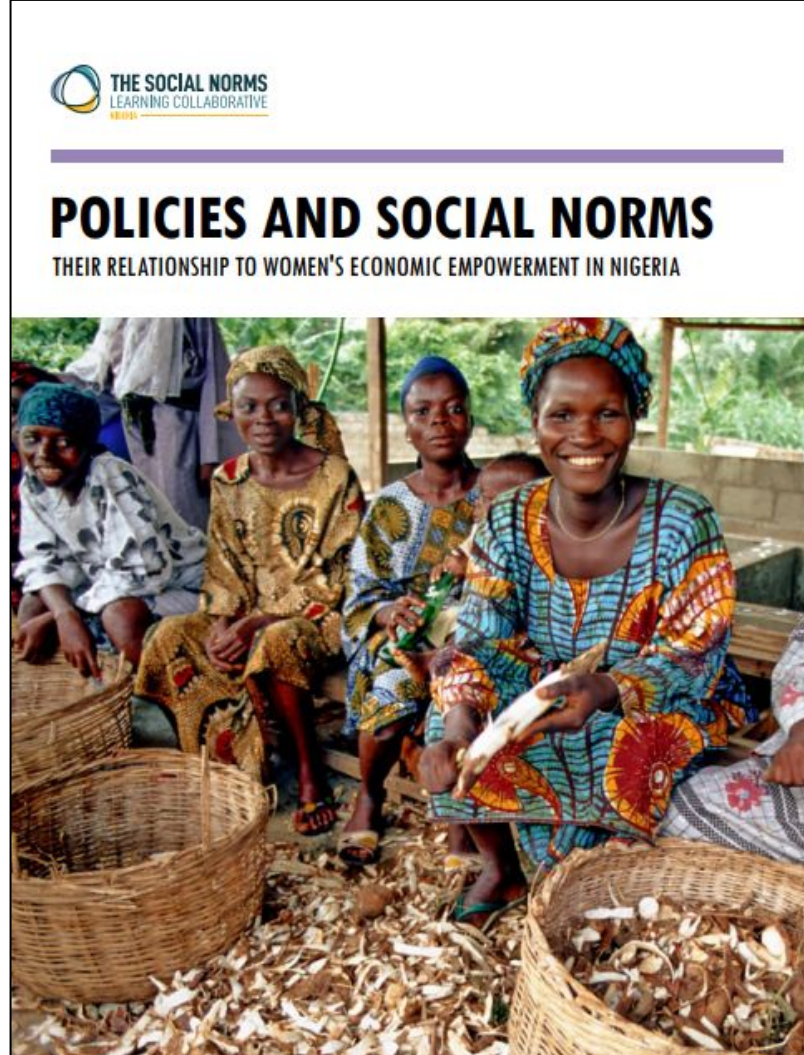
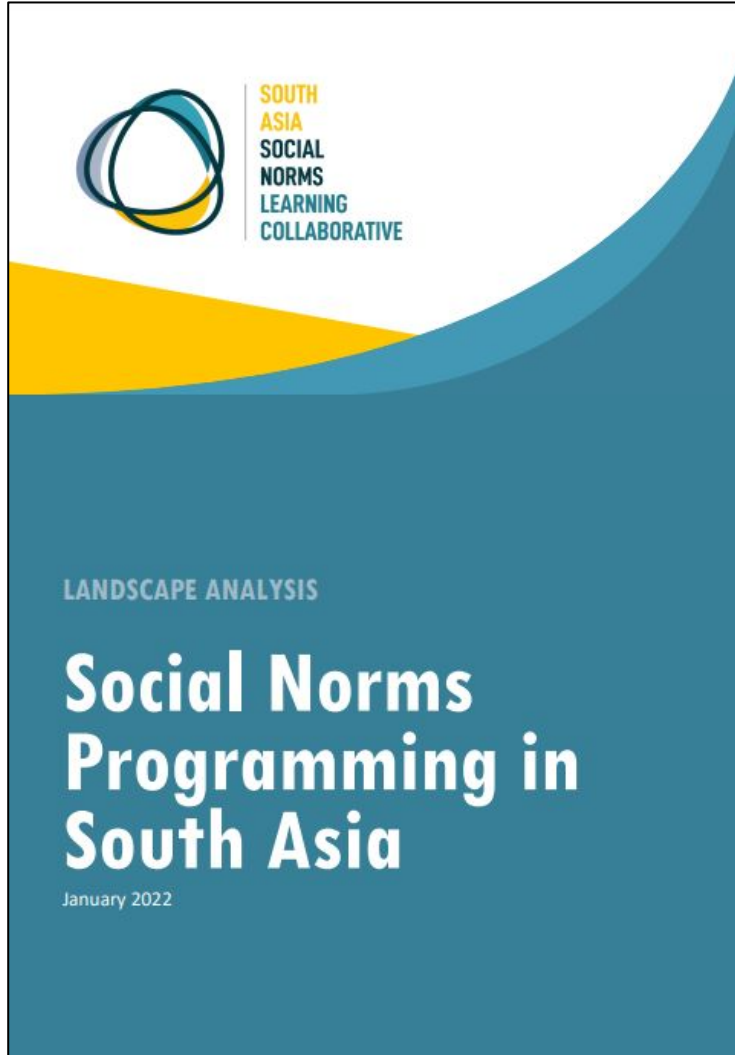


THE LEARNING COLLABORATIVE
TO ADVANCE NORMATIVE CHANGE

Breakt
FOR SOCIAL & B



Co-Create Social Norms Landscape Assessments



Document & Share Experiences

ALiGN Advancing Learning and Innovation on Gender Norms

Home About Themes Case studies and blogs Events Resources Stay informed



© Eric Lafforgue/2011. Portrait of teenage girls wearing green hijabs in Boorama, Somaliland.

The Learning Collaborative

About the Learning Collaborative

With funding from the Bill & Melinda Gates Foundation, the **Learning Collaborative to Advance Normative Change** envisions a world where the powerful influence of social norms in shaping adolescents' lives is widely understood, and where projects and programmes improve adolescent sexual and reproductive health by applying normative science at scale. The Learning Collaborative is an initiative for identifying, sharing and discussing norms-shifting interventions. Organised in three focused Learning Communities (Theory, Measurement, and Scale-Up), the Learning Collaborative contributes to efforts to build consensus on program, evaluation, and scale-up approaches for norms-shifting initiatives aiming to improve adolescent sexual and reproductive health and well-being.

LC Shared Resources



www.alignplatform.org/learning-collaborative

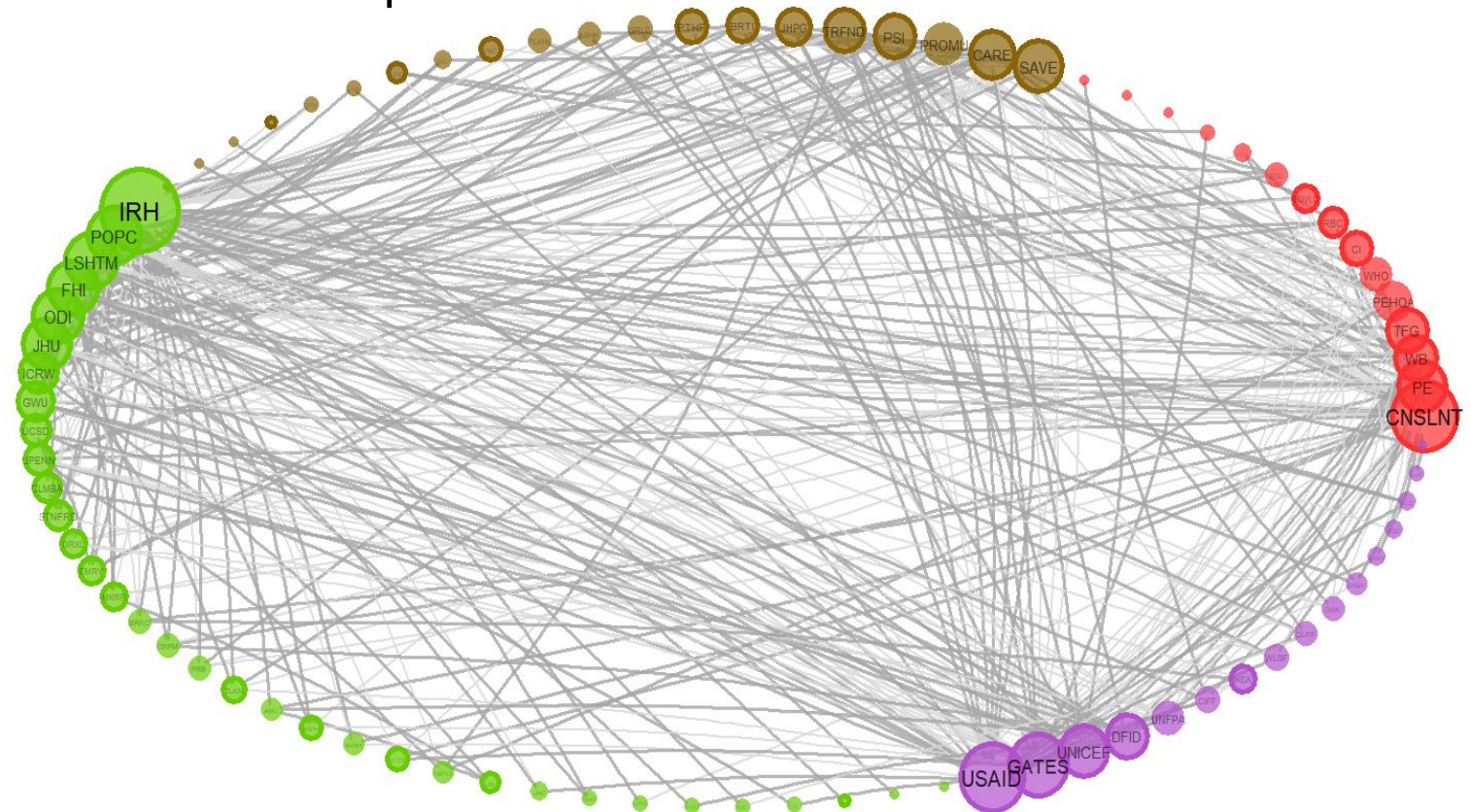
Reset

Improve Practice Through Partnerships

Connections between Learning Collaborative members have more than doubled since the LC's inception.

Partnership-Building Activities:

- Cross Community Coordinating Committee
- Mentorship & Small Grants
- Regional University, Faculty and Student Linkages



<https://www.alignplatform.org/global-learning-collaborative>

■ Funder ■ Researcher ■ Program Implementer ■ Other

Strengthen Capacity

Each LC has led webinars, trainings, and conferences to build capacity on social norms practice and interventions.



YOU'RE INVITED

**THE SOCIAL NORMS
LEARNING COLLABORATIVE
NIGERIA**

Virtual Conference on Social Norms
**Empowering Women Through Policy and
Practice Related to Social Norms in Nigeria**

Opening Remarks: Dr. Amina Baloni, Honorable Commissioner of Health

📅 17-18 November 2021
🕒 1:30pm-5:05pm WAT, 7:30am-11:05am ET
📶 Register to Connect via Zoom

More Information: hasbiyallah.ahmed@midspace.org | <https://bit.ly/NigeriaLC>



[https://www.youtube.com/channel/
UCeCMSAArLZnas64wDcA-UA/featured](https://www.youtube.com/channel/UCeCMSAArLZnas64wDcA-UA/featured)

The Critical Conversations Series

The LC Network designed and is hosting this series to bring attention and diverse perspectives and voices to important challenges and opportunities for social norms and agency research, policy, practice, sustainability, and measurement.

Previous Critical Conversations Sessions:



YOU'RE INVITED

Webinar
What is the role of the SNLCs in achieving gender justice?

Critical Conversation Series – Maiden Edition

📅 July 20, 2023
🕒 9:00 am EDT / 1:00 pm GMT / 2:00 pm WAT / 4:00 pm EAT / 6:30 pm IST
📶 [Register](#) to Connect via Zoom

REGISTER HERE

Hosted by the Social Norms Learning Collaborative - Nigeria

THE SOCIAL NORMS
LEARNING COLLABORATIVE



CRITICAL CONVERSATION

Linkages between Agency and Social Norms
to Promote Children's Rights and Justice

SAVE THE DATE

DATE
20th September 2023

TIME
5:00-6:30 PM IST
12:30 PM BST/ 2:30 PM EAT/ 7:30 AM EST

REGISTER NOW

THE SOCIAL NORMS
LEARNING COLLABORATIVE

Facilitator

Caroline Harper



Dr Caroline Harper is a Principal Research Fellow and Director of Gender Equality and Social Inclusion at ODI. She had a PhD in Anthropology and 35 years' experience in research, qualitative and participatory research methods, research management, policy analysis and advisory work.

Caroline set up the inclusion and gender programme at ODI and leads work on gendered social norms and culture change, and on adolescence and the achievement of critical capabilities.

She was formerly a co-director of the Chronic Poverty Research Centre and previously also established a research centre on childhood and chronic poverty. She has served on multiple advisory groups including the OECD-DAC SIGI index; the DFID ESCOR review panel on research; advisory groups including the UNICEF, Innocenti IRC Programme of Research, and the World Bank/ Donors, Special programme of Action on Africa.

Caroline is the author of the recently published book on Empowering Adolescent Girls: Gender Justice and Norm Change and the report: Gender, power and progress, a review of norm change since Beijing '95. She also regularly publishes for Journals and Blogs.

Panelist

Osasuyi Dirisu



Osasuyi Dirisu is the Executive Director at the Policy Innovation Centre and Senior Fellow at the Nigerian Economic Summit Group where she oversees behavioral and policy interventions in health, governance, gender, inclusion and social development in Nigeria.

She was formerly Research Director at the Population Council and in that role led the design and implementation of social research projects across sectors in Nigeria.

She led the UNDP Pillar 5 (data component) of the EU-Spotlight Initiative to eliminate inequality driven by gender norms and led the development of the National Gender Based Violence (GBV) Dashboard, an innovative data management and visualization platform for the collation of validated, real-time GBV data in Nigeria.

She led the conceptualization of the Gender and Inclusion Summit which has been institutionalized as an annual event to explore transformative ways to advance gender responsive governance and inclusion in Africa.

She holds an MB:BS degree from the University of Ibadan; MPH from the University of Lagos, an MBA from the Lagos Business School, Pan-Atlantic University and PhD from the University of Leeds, United Kingdom.

Panelist

Ellen Lust



Ellen Lust is a professor in the Department of Political Science and founding director of the Governance and Local Development Institute (GLD) at the University of Gothenburg.

Previously, Ellen was at Yale University, where she rose to full professor. She was a visiting scholar at the New York University Law School, the Graduate Institute for International Studies in Geneva, and the University of Sydney.

Ellen has conducted research in more than a dozen countries in the Africa and the Middle East, and authored numerous books and articles. Recent publications include, “Land and Legibility: When Do Citizens Expect Secure Property Rights in Weak States?” (2023) *American Political Science Review*, with K. Ferree, L. Honig, and M. Phillips; *The Middle East* (an edited textbook, Sage, 2023); *Everyday Choices: Competing Authorities and Social Institutions in Politics and Development* (Cambridge University Press, 2022); and *Safer Research in the Social Sciences* (SAGE, 2020), with J. Grimm, K. Koehler, I. Saliba, and I. Schierenbeck.

Panelist

Rajiv Rimal

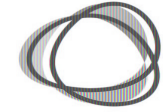


Rajiv N. Rimal is a Professor in the Johns Hopkins Bloomberg School of Public Health.

His work uses social norms theory to design, implement, and evaluate global public health interventions.

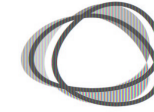
His current projects focus on the use of WhatsApp-based chatbots to promote vaccination in India, the assessment of gender resource centers in India, and promotion of maternal nutrition and institutional delivery in Ethiopia.

Panel Discussion



Open Q&A

In the Q&A box, share any questions you may have for the panelists.



Join the Next Critical Conversations Session

Hosted by Francophone Social Norms and Agency Learning Collaborative

Anticipated date in March

Additional details will follow



**SOCIAL NORMS & AGENCY
LEARNING COLLABORATIVE**

To join the Global Social Norms and Agency Learning Collaborative or any of the regional learning communities, please complete [this form](#) or send us an email at: **socialnormslc@gmail.com**

Thank You