

EALC Virtual Launch



1. Introduction

This report presents discussions and outcomes of a one-day (2 hours' online session) Eastern Africa Learning Collaborative (EALC) virtual launch meeting held on September 24, 2020, on Zoom.



2. Background

CARE International in Uganda and Makerere University School of Women and Gender Studies in partnership with University of California San Diego (UCSD) with funding from the Hewlett Foundation organized the launch of the Eastern Africa Learning Collaborative (EALC) network on Social and Gender Norms practice. The EALC, a voluntary network of actors in Uganda, Kenya, Tanzania, Rwanda, Burundi and DRC is part of the Global Learning Collaborative to Advance Normative Change, which brings together researchers, practitioners, evaluators and donors to collectively advance social norms theory, measurement and practice.



3. Delivery method of the Launch

The launch was delivered through online PowerPoint presentations, break away sessions and discussions by a mix of selected speakers.

5.0 WELCOME AND OPENING REMARKS BY CO-HOSTS OF EALC; Each of the speakers gave a brief about their organisation and institution respectively, their offer and interests in the EALC.



Apollo Gabazira
Country Director,
CARE International in Uganda

5.1. Apollo expressed his gratitude regarding the topic for discussion on gender and social norms in a structured scientific manner. He said the unique selling point for CARE is the expertise dealing with matters of gender, women and girls.

Apollo said, “CARE is targeting changing underlying gender norms that will lead to achievement of gender equality and empowerment of women”. He is optimistic that EALC will have an impact on the gender fraternity, validate approaches and models. “CARE comes with knowledge from experience to share (the supply side) as well as to learn (the demand side)”, said Apollo. CARE envisions knowledge creation and sharing in a seamless community of practice by the end of the EALC project period.



Prof. Sarah Ssali
Dean of Makerere School of
Women and Gender Studies
(SWGS)

5.2. Prof. Sarah Ssali said that the SWGS is a center of excellence in social norms research and developing tools and has experience in hosting networks. It is a *de facto* intellectual wing of Uganda’s feminist women’s movement. The School will offer a rich repository of research publications, training tools, feminist research methodologies and experience in tackling gender/social norms, sexuality, and adolescent sexual and reproductive health.

Prof Ssali said, SWGS is interested in intersectional issues and the structural drivers of gender inequality. “You cannot investigate the structural drivers without paying attention to the social norms. Norms are historical and keep resisting to change thus the need to collaborate and interrogate these foundational issues”. Explained Prof Ssali.

6.0 SESSION ONE: EALC GOALS



Dr Aramanzan Madanda
Principal Investigator,
EALC

About EALC goals

Dr Madanda gave an overview about EALC and highlighted the goals as follows;

- Strengthen networks among researchers, implementers and evaluators to generate evidence and improve practice
- Deepen understanding of social and gender norms and their application to policy and practice
- Generate and share evidence-based approaches, knowledge and innovations and resources on social and gender norms nationally, regionally and globally
- Improve gender and social norms programme implementation and evaluation

7.0 SESSION TWO: LINKAGES WITH THE GLOBAL COLLABORATIVE, WHAT SOCIAL NORMS ARE AND WHAT THEY INFLUENCE



Rebecka Lundgren
University of California
San Diego

Rebecka delivered this session and informed participants that with the founding of the Global LC in 2016, other different Global Learning networks have been established in Francophone (2018), South East Asia (2020), Nigeria (2020) and the Eastern Africa Collaborative (2020).

Rebecka mentioned some of the global barriers to social norms as follows;

- Failure to clearly articulate norms in program change
- Overly complicated language and approaches
- Perception that it is too difficult to shift norms
- Poor social norms diagnosis
- Weak evidence base
- Few tested social norms measures

8.0 SESSION THREE: Baseline survey Findings



Prof Grace B. Kyomuhendo
Makerere University - SWGS



Esther Nanjovu
CARE International in Uganda

Baseline survey findings

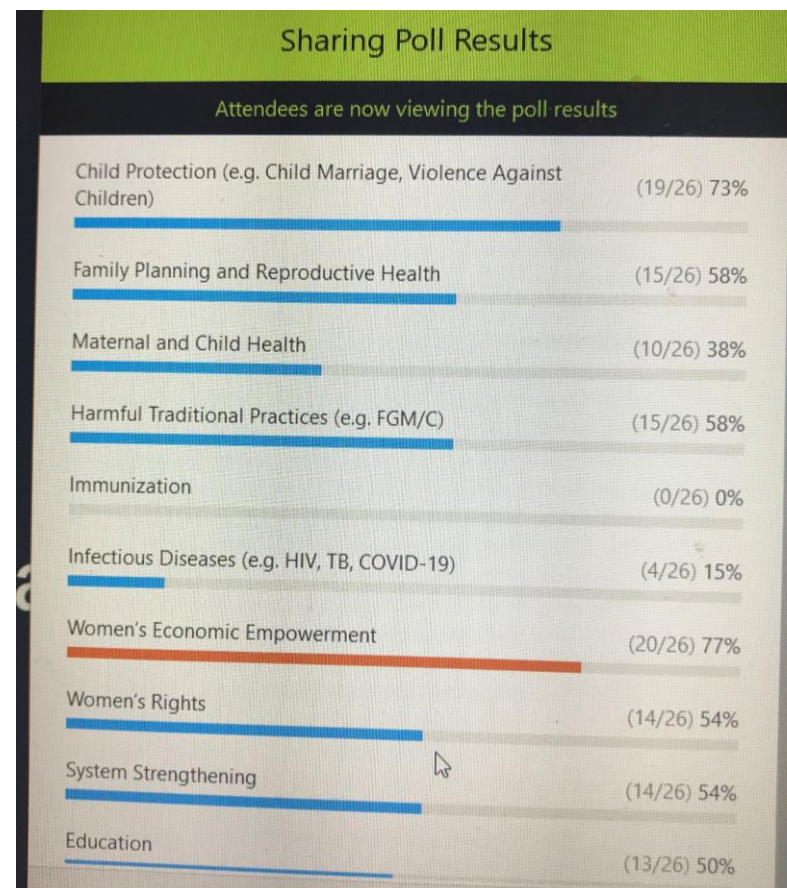
Esther Nanjovu and Prof Grace Bantebya delivered this session and presented findings from an online survey conducted in August 2020. About 54 participants from Uganda, Kenya, Tanzania, Ethiopia, Burundi and Rwanda, Burundi took part in this online survey. This survey had two objectives which included;

- Documenting the work currently done in Eastern Africa on social and behavior change that includes gender norms.
- Understanding how organizations may be connecting with others working in the space.

The findings focused on; identification of social norms, understanding of social norms, collaboration with other organizations working on social norms, integrating social norms approaches and effects of COVID-19.

9.0 POLL QUESTION TO PARTICIPANTS.

What thematic areas should the EALC focus on?



10. BREAK-OUT SESSIONS. Guiding questions

1. What do you bring to the EALC?
2. What do you expect to get from the EALC?
3. How do we want to work together?

11. EALC Virtual Launch Report back



Group 1

- Sharing experiences, gender advocacy especially targeting young people and keep them engaged on social and gender norms change
- Leverage/consolidate experiences and tapping into available evidence and models that have worked to change social and gender norms
- Lobbying and influencing government/policy makers on issues on social and gender norms change - targeting key policy actors - at regional and local levels.



Group 2

- Sharing experiences, research and evidence based, programmes and policy covering multiple areas, policy engagement and linking up with exiting platform
- Meeting quarterly and a regular platform.
- Working groups possibly thematic areas men engagement, refugees and forced migrants, women empowerment and rights care economy, children with disability evidence collection.



Group 3

- Continue to engage men, working with research, monitoring and evaluation.
- Coming up with advocacy for an initiative around norms change; continuous discussions and collaborations; virtual arrangement of frequent dialogues; advocating for increased investment in norm change initiatives.
- Networking and partnerships, working with influential people, gatekeepers, policymakers, media, private sector.



Group 4

- Tools, models, evidence, links to policy.
- Capacity building, common voice, leveraging, learning from each other, inform policy
- Learning events, sub-groups/clusters, mapping members and experts, virtual sharing, info hub, directory of experts.

Next Steps

Put the discussions and the presentations together and share with participants.

12. EALC Virtual Launch closing remarks, next steps and access to the recording



Maiken Mansfeld Jacobsen

**Programme Delivery and Coordination Specialist
-UNFPA-Uganda**

Closing remarks by Maiken Mansfeld Jacobsen;

- High expectations from this platform will give a head way and right direction
- Anticipates fruitful discussions and generation of very strong evidence (overtime) that informs programing and general approach to working with social norms change and gender issues.

Next Steps.

1. Compile the launch report and share with all the participants
2. Formation of four thematic working groups which include the following;
 - Research
 - Program Design and Implementation
 - Monitoring, Evaluation and Learning
 - Advocacy and Policy

EALC Virtual Launch Documents

- Access the **EALC Virtual Launch zoom recording through this link:** <https://youtu.be/gqt2H8jToVI>
- Access the **Virtual Launch's PowerPoint presentations through this link;** https://drive.google.com/file/d/1UdA-Q2sfEvbolyhPV_hdMgsBjOfobjUw/view?usp=sharing

Special thanks to all the members of the organising team from the University of California San Diego, Makerere University School of Gender and Women Studies, and CARE International in Uganda.

EALC Virtual Launch



4.0 Some of the Organizations represented at the Launch include:

- Action for Development (ACFODE)
- AVSI Foundation on Graduating to Resilience Activity
- CARE International
- IIDC
- Jaramogi University
- JOOUST Kenya
- Kampala International University in Tanzania
- Kisumu Shinnars Organization
- Makerere University
- Miserere University Child Health and Development Centre.
- Moi University, Kenya
- Partnership for African Social and Governance Research (PASGR), Nairobi
- RTI International
- Sexual Reproductive Health and Nutrition Program Coordinator
- Uganda Community Based Association for Women and Children's Welfare (UCOBAC)
- Uganda Women's Network (UWONET)
- United Nations Population Fund (UNFPA)
- University of California San Diego
- Women Educational Researchers of Kenya (WERK)

EALC Virtual Launch Participants



1. Alem Agazi
2. Alili Joseph
3. Andargachew moges
4. Apollo Gabazira
5. Aramanzan Madanda
6. BDE-DC-M3
7. Belinda Kyomuhendo
8. Benoit Munsch
9. Brendah Nanteza
10. Carol
11. Carolyn Namutebi
12. Charlotte Mafumbo
13. Christine Kabahuma
14. Doreen's iPhone
15. Dr. Emily Ondondo (Lecturer)
16. Eliza (E-le-e-za-) Ngutuku
17. Elizabeth Katusiime
18. Esther L. Walgwe
19. Esther N
20. Esther Namitala
21. Esther Nanjovu
22. Eunice Kamaara (Sella Jwan)
23. Euzobia Baine



24. Eve Namisango-
25. Fatia
26. FBO
27. Florence Ebila
28. Florence Muhanguzi Kyoheirwe
29. Fred Odindo
30. Geofrey Arum
31. Janestic
32. Josephine
33. Kagarura Mark
34. Kalyango Ronald Sebba
35. Kentaro Grace – CHUSS
36. Loretta Owino-Okeny (UCOBAC)
37. Lorna Magara
38. MADIPHA
39. Maiken Jacobsen
40. MAO
41. Mark Sengendo
42. Meital Kupfer
43. Melch Natukunda
44. Mercy Jelimo
45. Meredith Pierce
46. Mike B. Mukirane



47. Mirgissa Kaba
48. Musisi Richard
49. NancyC
50. Natalie Kimbugwe
51. NAWAD women
52. Ndagire
53. Norah Namono
54. Okwong Nancy
55. Paul Bukuluki
56. Pauline Ngimwa
57. Peace Musiimenta
58. Phoebe Mutonyi
59. Okeyo
60. Prof Grace Bantebya
61. Rebecka Lundgren
62. Robert Otim
63. Ronald
64. Roopal (ZanaAfrica)
65. Rose Wilder
66. Salama Nakiranda
67. Samalie
68. Sarah Ssali
69. Shallon Tuhirirwe



70. Sharon Atukunda
71. SIU
72. Sizomu
73. Sophia Yiega
74. Sylvia Kaawe
75. Tabitha
76. Teddy
77. Tibs
78. Wilson S
79. Yvonne



Grace Bantebya



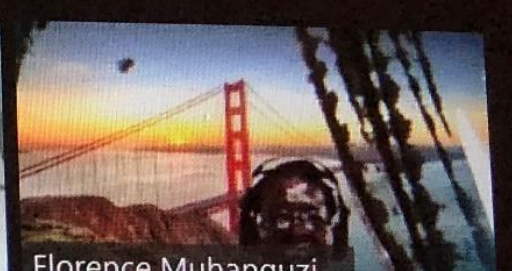
Rebecka Lundgren



Maiken Jacobsen



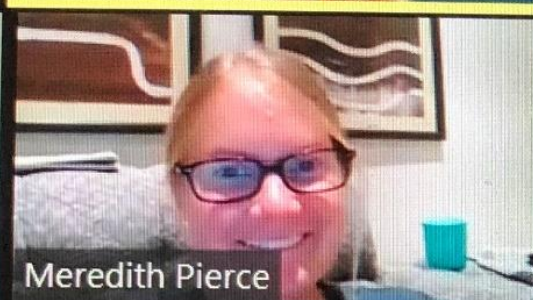
Aramanzan Madanda



Florence Muhanguzi...



Andargachew mo...



Meredith Pierce



Norah



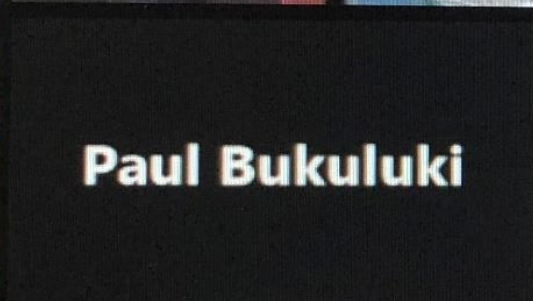
Apollo Gabazira



Sarah Ssali



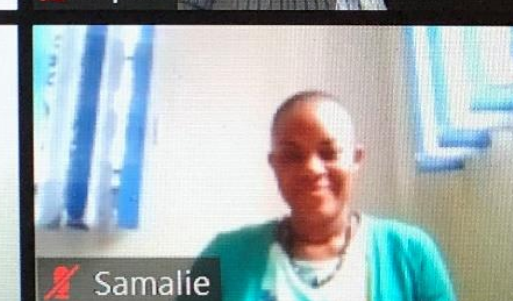
Donald



Paul Bukuluki



NancyC



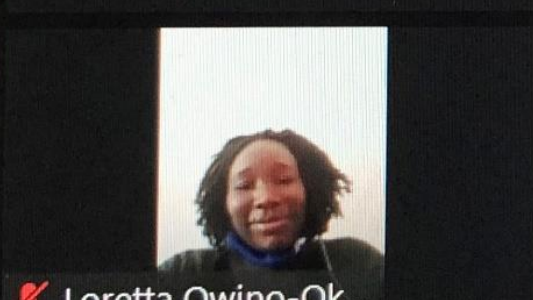
Samalie



MELCH NATUKU...



Kwong Nancy



Loretta Owino-Ok...



WilsonS



Kentaro Grace - C...



Alili Joseph

