

2020 HUMAN DEVELOPMENT PERSPECTIVES



Tackling social norms: A game changer for gender inequalities

Carolina Rivera

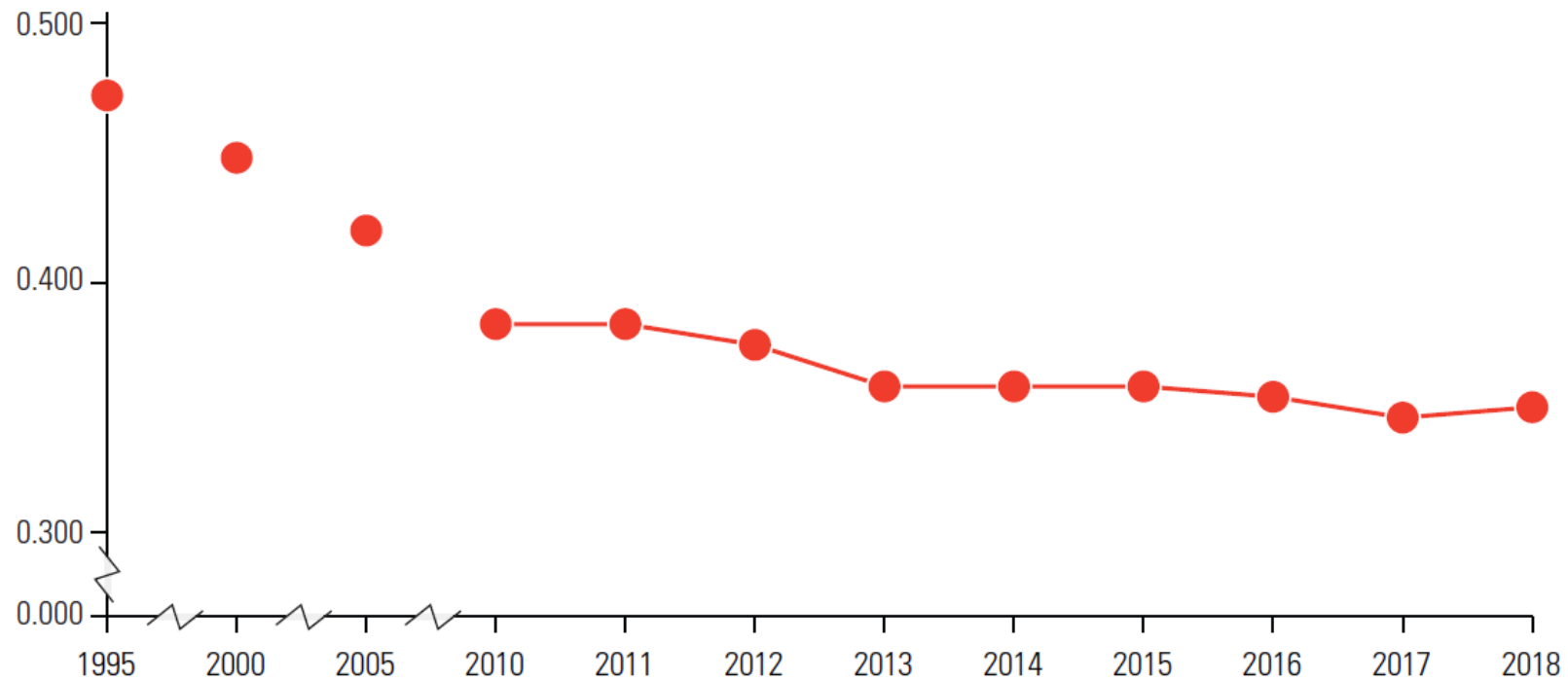


PROGRESS TOWARDS GENDER EQUALITY IS SLOWING, **GENDER INEQUALITY INDEX** SHOWS



HUMAN
DEVELOPMENT
REPORT OFFICE

Gender Inequality Index (mean value)

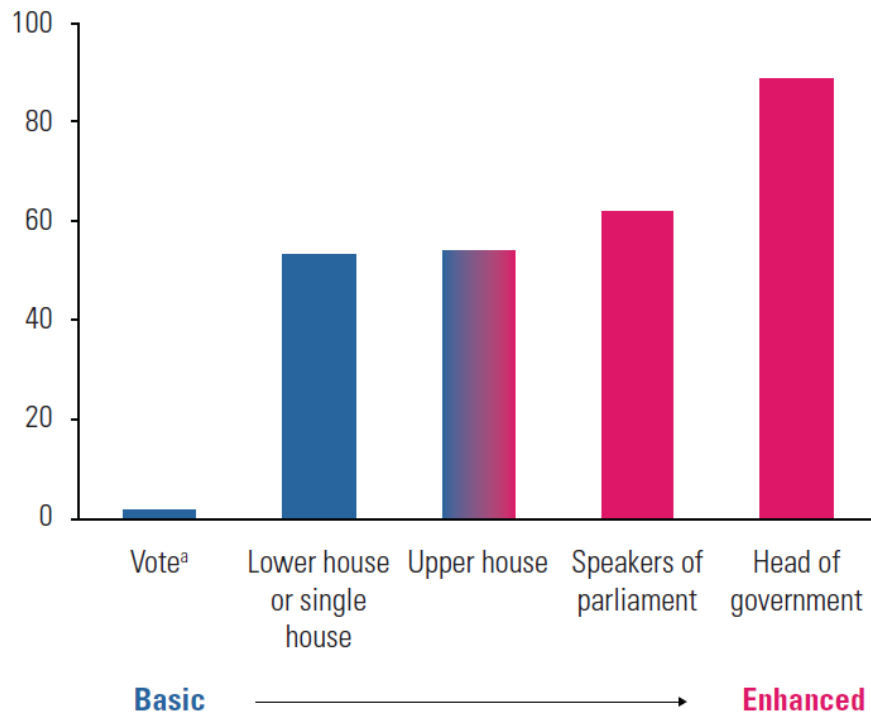


Source: Human Development Report Office.

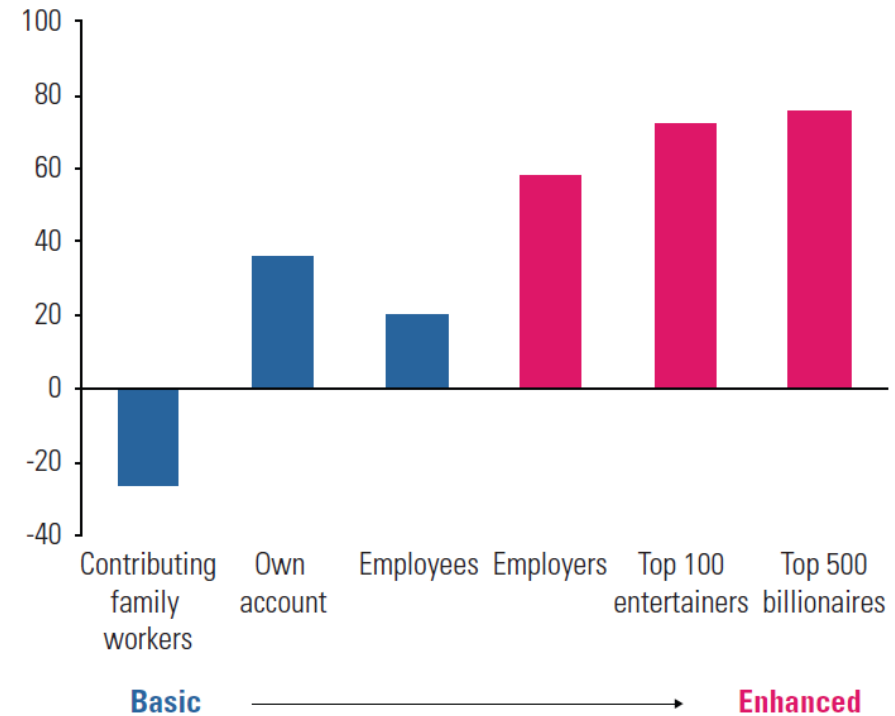
THE GREATER THE **EMPOWERMENT**, THE WIDER THE GENDER GAP



Global gender gap in politics
(gap with respect to parity, percent)

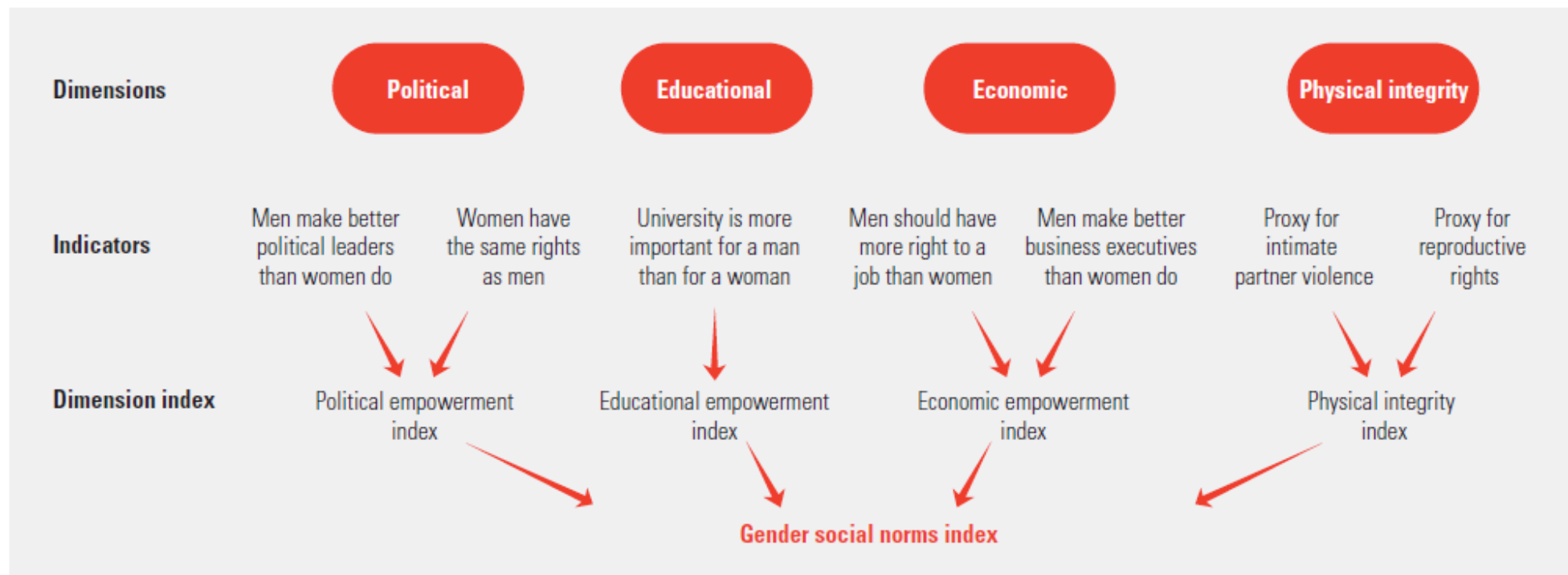


Global gender gap per type of employment
(gap with respect to parity, percent)



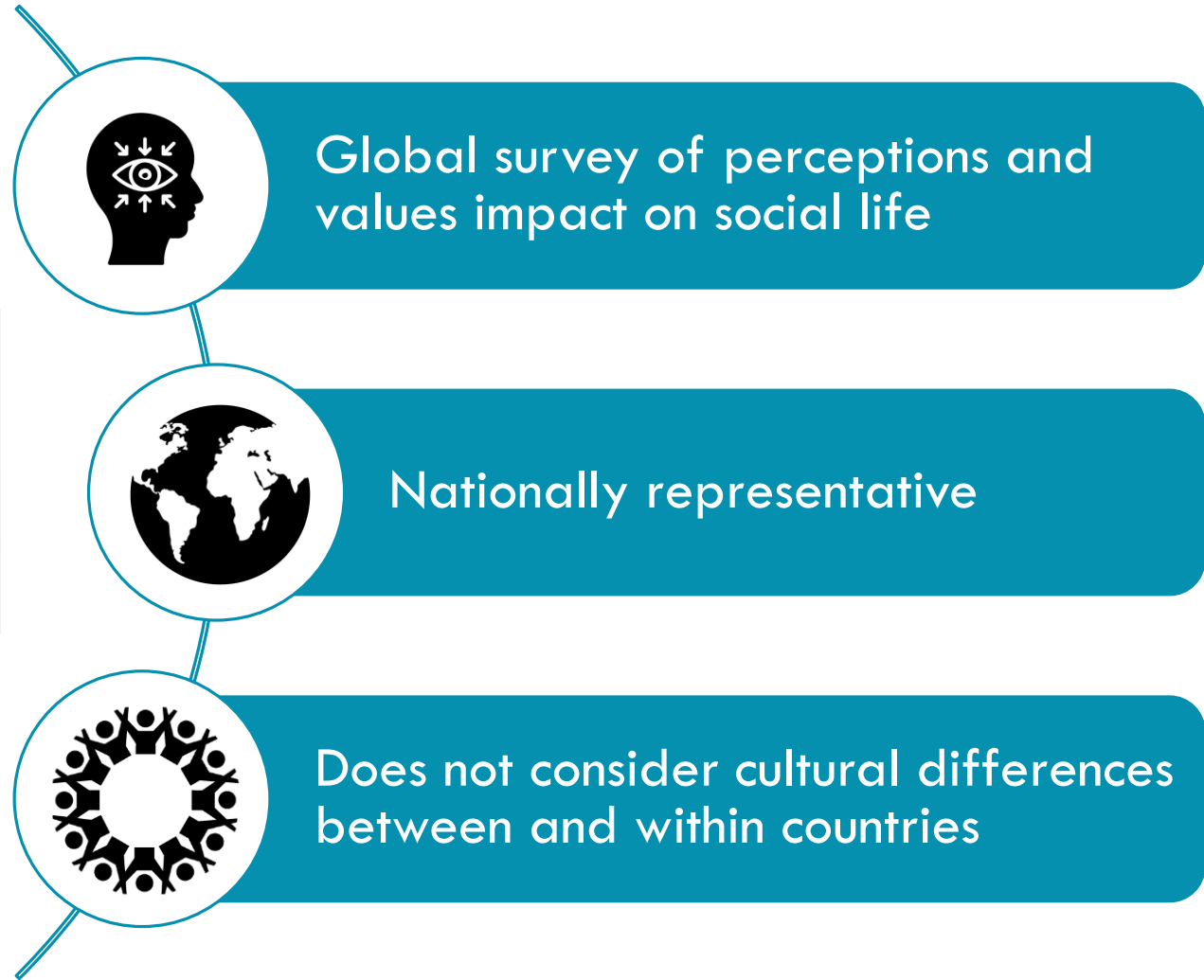
Source: Human Development Report Office calculations based on data from the World Values Survey, the Inter-Parliamentary Union, ILO (2019b) and Forbes (2019).

HOW **SOCIAL BELIEFS** CAN OBSTRUCT GENDER AND WOMEN'S EMPOWERMENT



Source: Mukhopadhyay, Rivera and Tapia (2019).

DATA SOURCES



GENDER SOCIAL NORMS INDEX: TABLES



TABLE A1

Gender Social Norms Index (GSNI), last available period

TABLE A1

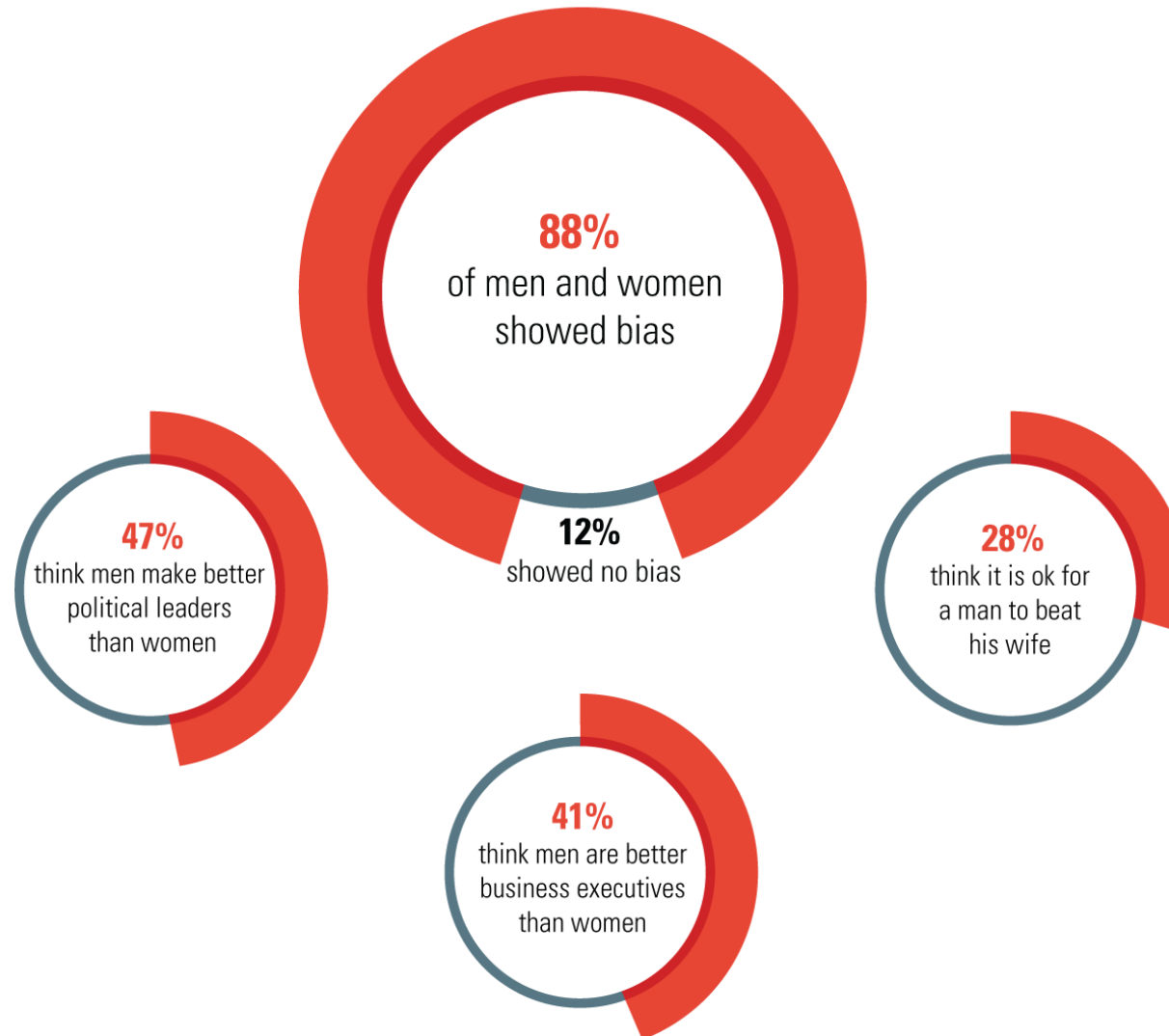
Country	Period	GSNI	GSNI2	Share of people with no bias	Share of people biased by dimension			
		(share of people with at least 1 bias)	(share of people with at least 2 biases)		Political	Economic	Educational	Physical integrity
		%	%	%	%	%	%	%
Algeria	2010–2014	97.83	87.00	2.17	80.08	74.08	37.17	86.75
Andorra	2005–2009	27.01	7.43	72.99	14.08	8.73	1.81	12.01
Argentina	2010–2014	75.41	42.49	24.59	43.35	30.43	17.04	52.86
Armenia	2010–2014	94.11	81.28	5.89	72.82	75.91	24.89	66.14
Australia	2010–2014	46.24	23.00	53.76	32.48	18.06	4.09	20.93
Azerbaijan	2010–2014	99.14	93.82	0.86	85.13	91.97	30.90	72.16
Belarus	2010–2014	90.37	71.70	9.63	77.82	58.45	21.19	55.52
Brazil	2010–2014	89.50	52.39	10.50	43.41	36.63	9.32	77.95

- Table A1 Gender Social Norms Index GSNI last available period
- Table A2 Gender Social Norms Index (GSNI), last available period by gender
- Table A3a Gender Social Norms Index (GSNI), trends
- Table A3b Gender Social Norms Index (GSNI), trends by gender

SOCIAL NORMS ARE A MAJOR OBSTACLE FOR GENDER EQUALITY



HUMAN
DEVELOPMENT
REPORT OFFICE



ONLY 14 PERCENT OF WOMEN AND 9 PERCENT OF MEN WORLDWIDE HAVE NO GENDER SOCIAL NORMS BIASES

Percent of surveyed population responding with biases towards gender equality and women's empowerment

	Women	Men
No bias	13.9	9.4
Bias in: 1 indicator	23.7	17.6
2 indicators	20.3	17.2
3 indicators	15.7	17.1
4 indicators	13.9	17.8
5 indicators	9.0	13.5
6 indicators	2.9	6.3
all 7 indicators	0.4	1.1



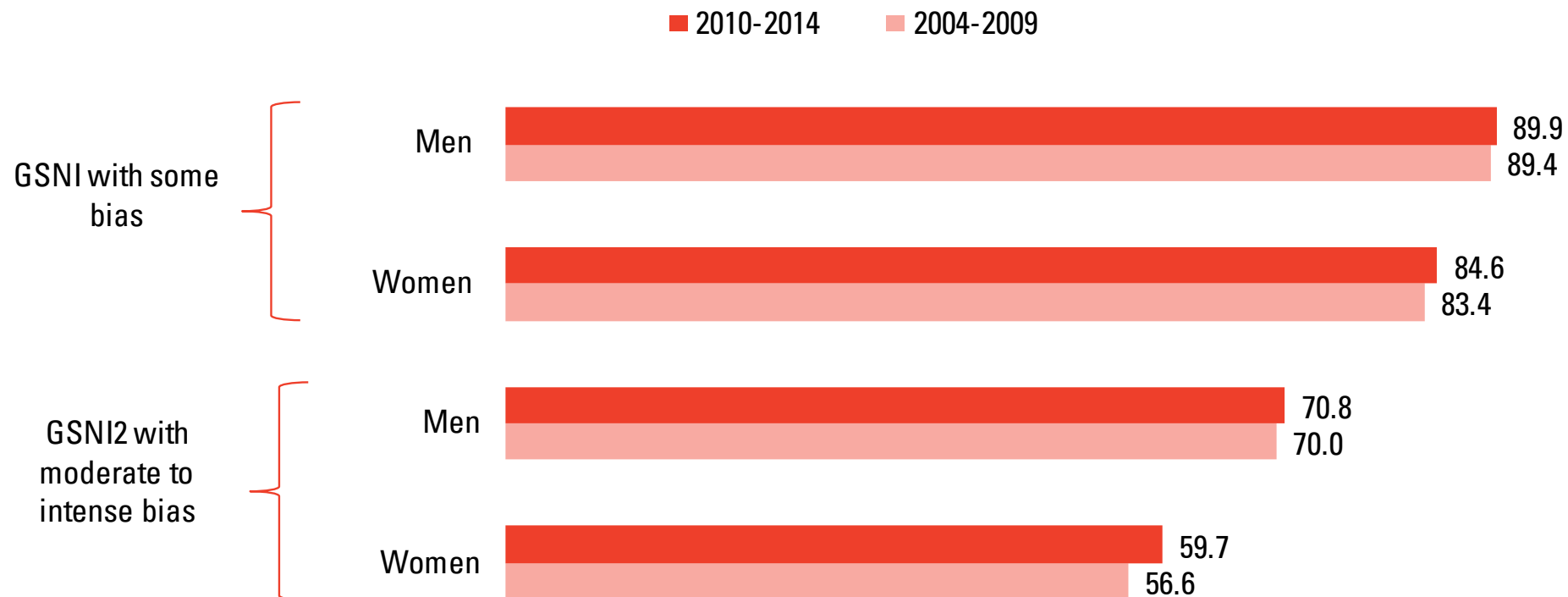
Note: Based on 75 countries and territories with data from wave 5 or 6 of the World Values Survey, accounting for 81 percent of the global population.

Source: Mukhopadhyay, Rivera and Tapia (2019), based on data from the World Values Survey.

BIAS AGAINST GENDER EQUALITY IS ON THE RISE



HUMAN
DEVELOPMENT
REPORT OFFICE



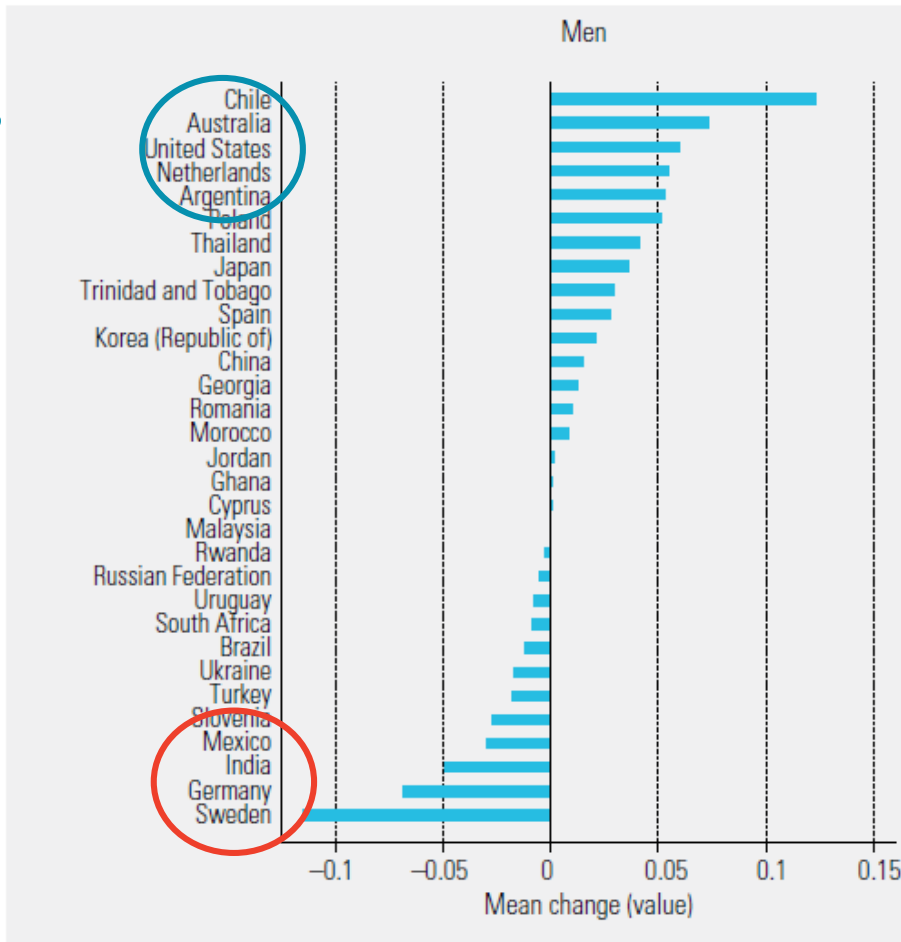
Source: Human Development Report Office calculations based on World Values Survey for 31 countries with time series data, representing 59 percent of the global population.

PROGRESS IN THE SHARE OF MEN AND WOMEN WITH NO GENDER SOCIAL NORMS BIAS

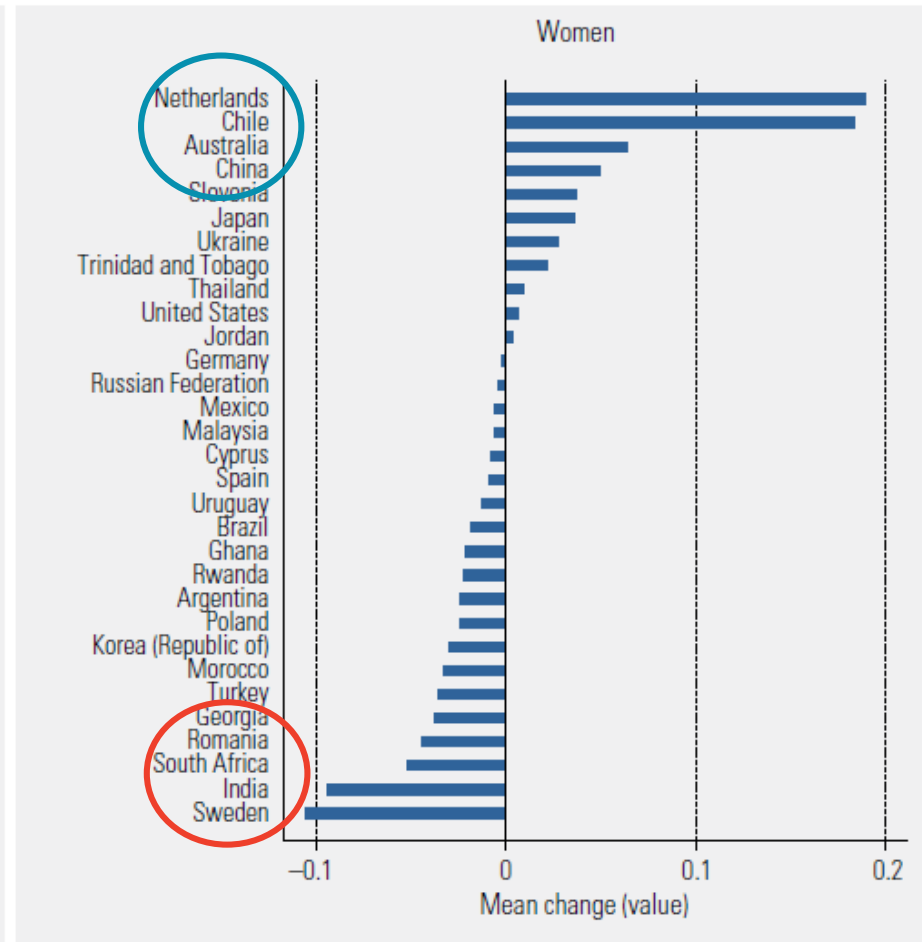


HUMAN
DEVELOPMENT
REPORT OFFICE

Large
progress



Backlash



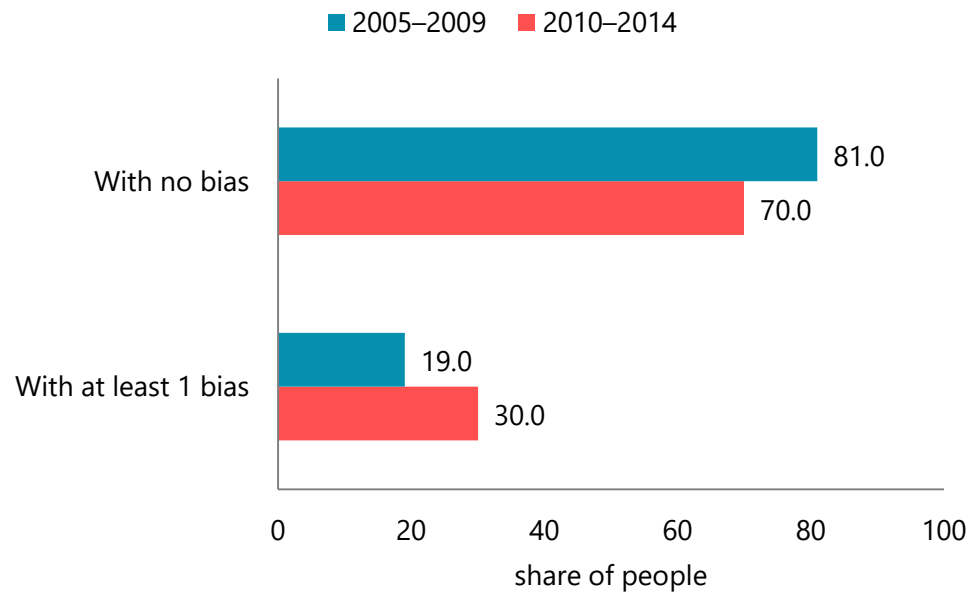
Note: Balanced panel of 31 countries and territories with data from both wave 5 (2005–2009) and wave 6 (2010–2014) of the World Values Survey, accounting for 59 percent of the global population.

Source: Mukhopadhyay, Rivera and Tapia (2019), based on data from the World Values Survey.

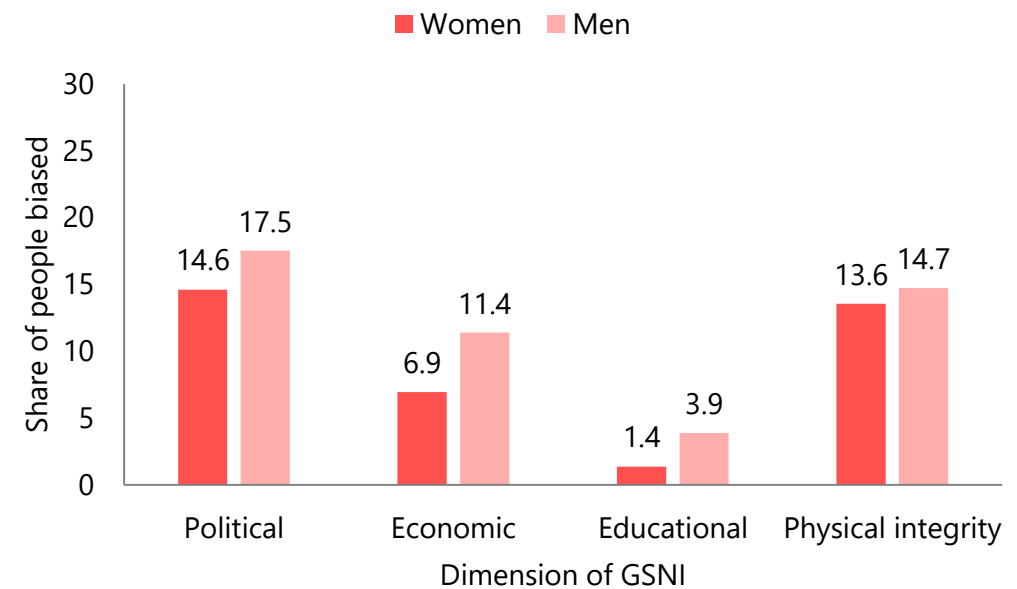
COUNTRY EXAMPLE: SWEDEN



Share of people with at least 1 bias and with no bias, 2005-2009 and 2010-2014



Share of people biased by sex for each dimension of the GSNI, last available period



Source: Human Development Report Office, based on data from the World Values Survey.

COUNTRY EXAMPLE: CHILE

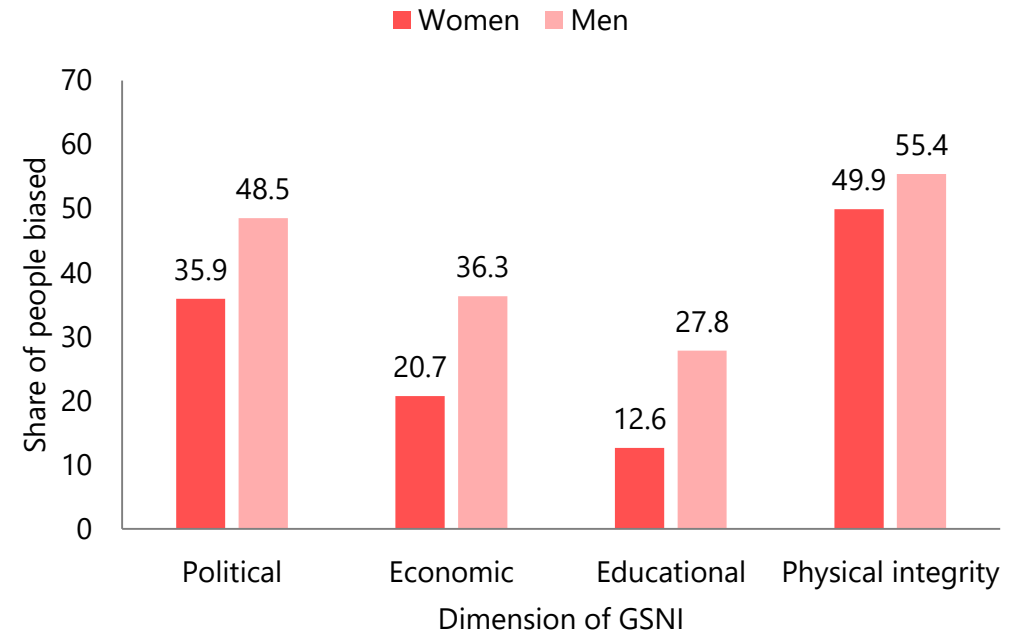


HUMAN
DEVELOPMENT
REPORT OFFICE

Share of people with at least 1 bias and with no bias, 2005-2009 and 2010-2014



Share of people biased by sex for each dimension of the GSNI, last available period

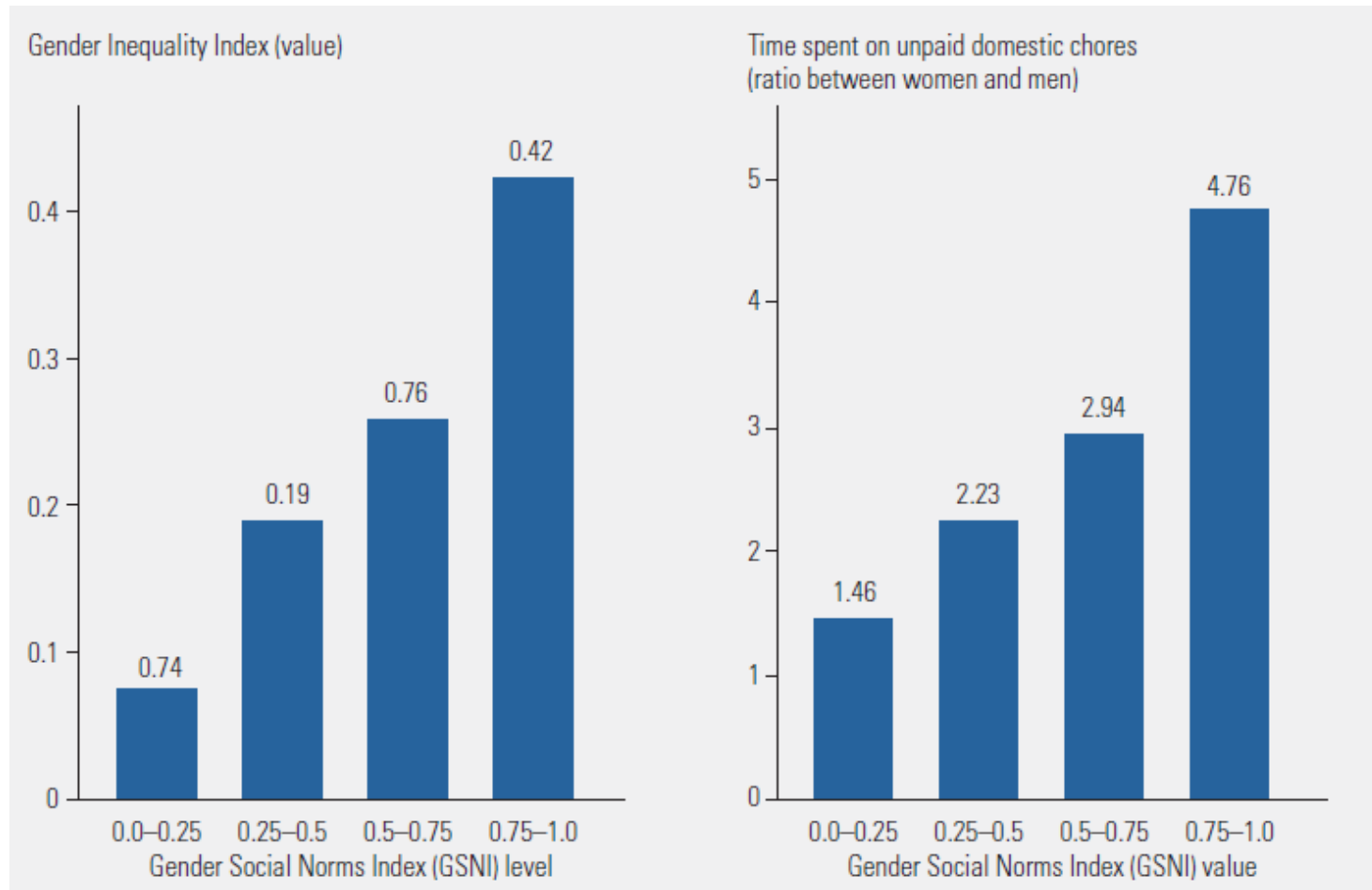


Source: Human Development Report Office, based on data from the World Values Survey.

COUNTRIES WITH HIGHER SOCIAL NORMS BIASES TEND TO HAVE HIGHER GENDER INEQUALITY



HUMAN
DEVELOPMENT
REPORT OFFICE



KEY MESSAGES: EVEN NORMS CAN BE SHIFTED



- Gender equality and women's rights have had **progress**, but it is **slowing down**.
- **Gender gaps** are closing for basic capabilities and growing for enhanced.
- **Social norms** and attitudes are one of the **major obstacles** for gender equality and women's empowerment.
- The **backlash** against women's rights is becoming stronger.
- We must act NOW, even **norms can be shifted** towards gender equality.



HUMAN DEVELOPMENT REPORT OFFICE

 www.hdr.undp.org

 facebook.com/HumanDevelopmentReport

 twitter.com/hdrundp